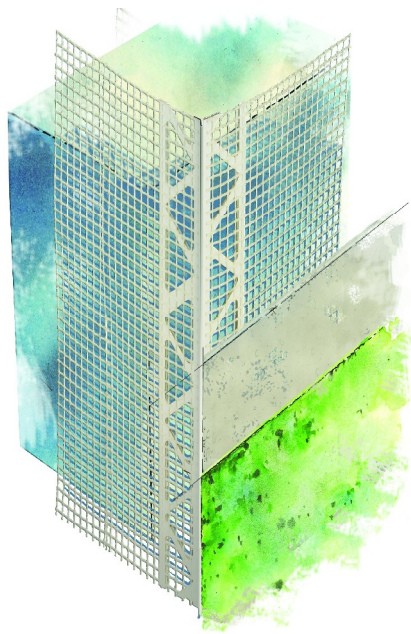
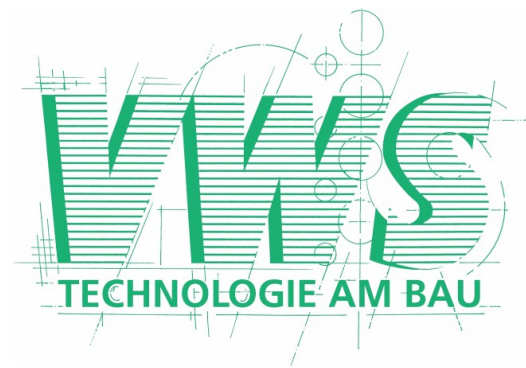


TECHNICAL DATA SHEET



Corner bead PVC with mesh and nose
Article no. 7020

Specifications:

Basic shape	angle bead
Lengths of profiles	2.5 m
Leg width of the mesh	10x10 cm
Packing unit	25 pieces
Packing content	62.5 m

Application:

The VWS-mesh angle is used as a reinforcement angle and for exact and vertically oriented formation of 90° building-angles and edges as well as window- and door-embrasures. At the appliance the mesh has to be filled holohedral.

Equipment of the product:

The profile is produced out of impact resistant and UV- and weather-proof PVC. The fibre glass mesh is alkali-proof and dislocation resistant.

Important details:

Cool and dry storage!
Horizontal transporting and stocking!

All details complies the up-to date our knowledge and experience. Our information characterise simply the character our products and don't account for contractual legal relationship. They don't absolve the customer from verifying our products to their applicability for the contemplated usage on their own. We reserve the right for changing due to technical or planning laws. Product-drawings on this sheet aren't true to scale. With publishing this technical data sheet are all back issues invalid. As of 04.2009 Rev. b (22.01.2010)